

ASTRO

Hot & Cold 



PAYMENT SYSTEMS

Astro is pre-set for the installation of systems with Executive, BDV and MDB protocol as well as for installation of validators.

The following can be fitted to the same machine:

- Change-giver, validator or coin mechanism.
- Bill acceptor.
- Cashless system with key or card.

ACCESSORIES

- Mechanical selections counter kit
- Internal lamp kit
- Delivery area lighting kit
- Cup sensor + delivery area lighting kit
- Motorised automatic slider kit
- Water self-feeding by 1 or 2 tanks (20 or 2x20 litre)
- Cooler units (4 models)
- Kit for connecting "bag in box" syrups
- 9th instant ingredient container kit
- Premixed sugar installation's kit
- Lid for coin box
- Resin softener unit kit
- Espresso unit heater kit
- Heater for powder conveyor kit
- Master/slave connection kit
- RS232 jack kit
- GSM kit

CHARACTERISTICS

Height	1830 mm*
Width	650 mm
Depth	742 mm
Overall depth with door open	1320 mm
Weight	170 kg approx.
Power supply voltage	230 V
Power supply frequency	50 Hz
Installed power	2400 W
Water mains pressure (With 3/4" gas male connection)	0.5 to 8.5 bar

*Adjustable feet: +10 -5 mm

EXAMPLES OF POSSIBLE CONFIGURATIONS

	ASTRO IN 8 (8 canisters with instant products)	ASTRO ES 7 (Bean-to-cup unit + 6 canisters)	ASTRO 2 ES 8 DOUBLE BEAN-TO-CUP UNIT (2 coffees in one + 6 canisters)
Bean coffee		☕	☕
Bean coffee 2		☕	☕
Instant espresso coffee	☕		
Coffee long	☕	☕	☕
Espresso coffee long 2		☕	☕
White coffee	☕	☕	☕
Café au lait	☕	☕	☕
Espresso white coffee 2		☕	☕
Cappuccino	☕	☕	☕
Cappuccino 2		☕	☕
Espresso choc	☕	☕	☕
Chocolate	☕	☕	☕
Chocolate strong	☕	☕	☕
Chocomilk	☕	☕	☕
Decaffeinated instant espresso coffee	☕	☕	
Decaffeinated instant coffee	☕	☕	
Decaffeinated instant white coffee	☕	☕	
Decaffeinated instant café au lait	☕	☕	
Decaffeinated instant cappuccino	☕	☕	
Instant finished product	☕		
Lemon tea	☕	☕	☕
Soup	☕	☕	☕
Instant tea			☕
Instant white tea			☕
Milk	☕	☕	☕
Cup only		☕	

INSTALLATION OF A COOLING UNIT ALLOWS TO OFFER UP TO 6 COLD SELECTIONS

INSTANT PRODUCTS

COFFEE BEANS

INGREDIENT	MODULAR CANISTER A 7 l Volume 10.5 l		CANISTER C Volume 4.5 l	MODULAR CANISTER D 8.5 l Volume 13.3 l		CANISTER F Volume 10.5 l
	Approx. capacity (kg)		Approx. capacity (kg)	Approx. capacity (kg)		Approx. capacity (kg)
Coffee beans	/	/	/	2.8	1.8	4.2
Milk	2.6	1.3	1.7	/	/	/
Chocolate	5.2	2.6	3.4	/	/	/
Tea	6.4	3.2	4.2	/	/	/
Fresh brew tea	2.6	1.3	1.7	/	/	/
Instant Coffee	1.8	0.9	1.2	/	/	/
Sugar	6.2	3.1	4	/	/	/
Soup	6	3	3.9	/	/	/

CAPACITY

Cups (Ø 70-71 or 73-74 mm)	up to 690*
Stirrers (length 95/105 mm)	575
No. of ingredient containers	up to 8
Espresso boiler	0.6 l
Instant boiler	4.2 l

*166 cc

POWER CONSUMPTION

Espresso version To reach operating temperature For each hour of stand-by	469 Wh 210 Wh
Instant version To reach operating temperature For each hour of stand-by	370 Wh 200 Wh



N&W GLOBAL VENDING S.p.A.
Via Roma 24, 24030 Valbrembo (BG) Italy
Ph. +39 035 606111 - Fax +39 035 606519

www.nwglobalvending.com

L206U01

N&W Global Vending reserves the right to alter specifications without notice.

Wide range of quality drinks

Modular and flexible configurations

Two types of coffee beans from one espresso unit

Back-lit photographic panels and product labels are easy to customise

Snap-on systems and new technical solutions for easy cleaning and maintenance

Advanced 16-bit electronic control

Lock with programmable code

Cold drink option

Designed to co-ordinate with the entire Necta range

ASTRO

Top performance without compromise

Astro is the new medium volume hot & cold drinks machine by Necta, which is based on the very popular Zenith and innovative Kikko models. Thanks to the new technical solutions, simple to use 18 direct selection buttons, standard Necta components and eye catching design, Astro offers remarkable performance for a machine in this market segment. Available in three models (instant, espresso and double espresso), Astro offers a wide choice of drinks to suit every taste.

INNOVATIONS

Astro can have up to 8 product containers with six different capacities (see rear), allowing the correct proportion of products based on effective consumption.



Furthermore, Astro can boast an espresso leaf tea unit, which can prepare excellent drinks by extracting maximum flavour from the leaf tea. The brewer unit can be used for all types of tea leaves (those suitable for fresh-brew units). It can also be used for specialty teas, with specific settings and cycle timing (on demand).

New modular container with separate lids. The 7 litre sector is on the right or left.



But the real innovation is represented by the compact new bean-to-cup unit which has a split canister allowing two different types of coffee beans to be offered. The unit has two grinders and two dosers but only one brewer and offers delicious espresso coffee - managing an outstanding total capacity of 4.6 kg.



Cleaning and maintenance operations are particularly easy thanks to the smooth wipe-clean surfaces and the new snap-on systems.

USER INTERFACE

- 18 pushbuttons plus pre-selection to adjust the drink or sugar strength
- Large backlit labels for perfect readability
- 4 line blue alphanumeric LCD display
- Progression bar on the display with a sound signal at the end of the dispensing cycle
- Full compliance with regulations for the disabled

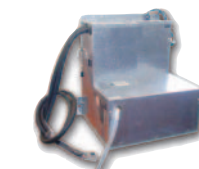
DESIGN

With its curved front door and backlit photographic panels, Astro suits the most design conscious workplace, with the added advantage of taking up minimum floor space. Clearly designed backlit product labels and direct selections ensure a simple and efficient drink service.



Astro with new bean-to-cup unit with split canister offering two types of coffee beans.

HIGHEST DRINK QUALITY



Thanks to the Z 3000 brewer unit and the Necta mixers, all with an excellent pedigree, Astro can offer delicious espresso coffee and excellent instant drinks. The ideal temperature and a high standard of presentation are ensured by the short dispensing route of the drink and by the proximity of the spouts to the cup rim. As an option, Astro can have a cooling unit for still or carbonated water plus 2 syrups or powders, with up to 6 selections available.

ELECTRONIC CONTROL

The 16-bit electronic control with incorporated flash EPROM is extremely flexible and complete, as well as being compatible with the PC application "Flash". Through a palmtop with RS232 connection or the Up-Key, Flash allows the downloading of sales statistics (also in EVA-DTS format), the cloning of existing set-ups and the software updating. With Flash it is also possible to have remote monitoring of the machine using GSM technology. Astro is highly flexible and it is easy to reconfigure the selection menu, as it is possible to assign one of the 18 pushbuttons to one of the many drink selections stored in the memory. Astro can be banked alongside Sfera or Necta new generation vending machines, using master or slave mode, which allows both machines to share a single payment system, combined selections or a single modem for GSM connections.



Cup station accepts up to 14 cm high jugs.